

# 2015-2021 Shock Relocation Kit

If your IHC Suspension product has a damaged or is missing a part, please contact customer service directly and a new replacement part will be sent to you immediately. For warranty issues, please return to the place of installation and contact IHC Suspension.

## LIMITED LIFETIME WARRANTY

This unique product warranty proves our commitment to the quality and reliability of every product that IHC Suspension manufactures. The IHC Suspension product warranty only extends to the original purchaser of any IHC Suspension product, if it breaks, we will give you a new part. Warranty does not apply to discontinued parts.

Our Limited Lifetime Warranty excludes the following IHC Suspension items, bushings, bump stops, ball joints, and shock absorbers. These parts are subject to wear and are not considered defective when worn. They are warranted for 12 months from the date of purchase for defects in workmanship.

This product warranty is voided if the vehicle is not aligned after kit installation and proper maintenance is routinely done.

Product purchased directly from IHC Suspension has a 30-day return policy on uninstalled products from the date of purchase (may be subject to restocking fee). Uninstalled product returns must be in the original IHC Suspension packaging. Please call 956-424-6901 to get an RMA# for any return. Customer is responsible for shipping costs back to IHC Suspension. Returns without RMA# will be refused. Contact IHC Suspension directly about any potentially defective parts prior to removal from vehicle.

IHC Suspension products are NOT intended for off-road abuse. Any damage or failure as a result from off-road abuse voids the warranty of the IHC Suspension product. IHC Suspension is NOT responsible for any subsequent damages to any related vehicle parts due to misuse, abuse, improper installation, or lack of maintenance. Furthermore, IHC Suspension reserves the right to change, modify or cancel this warranty without prior notice.

READ INSTRUCTIONS THOROUGHLY AND COMPLETELY BEFORE BEGINNING INSTALLATION. INSTALLATION BY A CERTIFIED PROFESSIONAL TECHNICIAN IS HIGHLY RECOMMENDED.

IHC SUSPENSION IS NOT RESPONSIBLE FOR ANY DAMAGE OR FAILURE RESULTING FROM IMPROPER INSTALLATION.

**SAFETY WARNING:** MISUSE OF THIS PRODUCT COULD LEAD TO INJURY OR DEATH. Suspension systems or components that enhance the on and off-road performance of your vehicle may cause it to handle differently than it did from the factory. Extreme care must be used to prevent loss of control during abrupt maneuvers. Always operate your vehicle at reduced speeds to ensure your ability to control your vehicle under all driving conditions. Failure to drive safely may result in serious injury or death to driver and passengers. Driver and passengers must ALWAYS wear seat belts, avoid quick sharp turns and other sudden maneuvers. IHC Suspension does not recommend the combined use of suspension drop spindles, drop struts, drop springs or other lowering devices. You should never operate your vehicle under the influence of alcohol or drugs. Constant maintenance is required to keep your vehicle safe. Thoroughly inspect your vehicle before and after every drag race/race use. It is the responsibility of the retailer and/or the installer to review all state and local laws, with the end user of this product, related to bumper height laws and the lowering of their vehicle before the purchase and installation of any IHC Suspension products. It is the responsibility of the driver/s to check their surrounding area for obstructions, people, and animals before moving the vehicle. All lowered vehicles may have increased blind spots; damage, injury and/or death can occur if these instructions are not followed.

**INSTALLATION WARNING:** All steps and procedures described in these instructions were performed while the vehicle was properly supported on a two-post vehicle lift with safety jacks. Use caution during all disassembly and assembly steps to ensure suspension components are not over extended causing damage to any vehicle components and parts included in this kit. Included instructions are guidelines only for recommended procedures and are not meant to be

definitive. Installer is responsible to insure a safe and controllable vehicle after performing modifications. IHC Suspension recommends the use of an OE Service Manual for model/year of vehicle when disassembly and assembly of factory and related components. Unless otherwise specified, tighten all bolts and fasteners to standard torque specifications listed within the OE Service Manual. Suspension components that use rubber or urethane bushings should be tightened with the vehicle at normal ride height. This will prevent premature wear or failure of the bushing and maintain ride comfort. Larger tire and wheel combinations may increase leverage on suspension, steering, and related components. Due to payload options and initial ride height variances, the amount of drop is a base figure. Final ride height dimensions may vary in accordance with original vehicle ride height. Always measure the vehicle ride height prior to beginning installation.

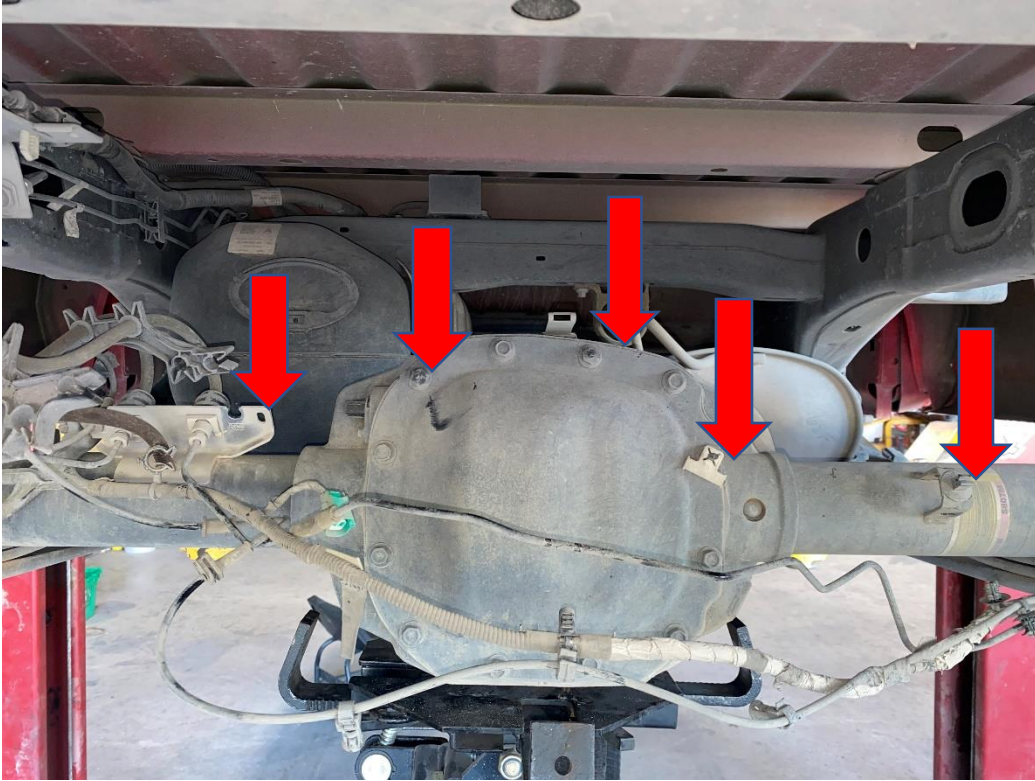
## PRE-INSTALLATION MEASUREMENTS

It is imperative that you record the following measurements and factory components in the tables below. IHC Suspension tests and records as much data from each application as available at the time of product development. Vehicle manufacturers may change components or add models with different options. Recording and not exceeding the fender-to-hub-center IHC Suspension calls out will ensure the drop on the vehicle is correct. These measurements will affect the performance of this lowering kit. Failure to ensure proper stock conditions may result in over lowering, causing premature failure on ball joints, if 4wd, axles, CV boots and drivetrain. Over lowering a vehicle will also result in an incorrect wheel alignment. This will wear tires incorrectly. Incorrect alignment will cause poor vehicle handling issues including but not limited to under steer. Over lowering the vehicle will also cause incorrect suspension geometry resulting in poor ride quality accompanied by pops and clunks which are symptoms of prematurely wearing components. Failure to adjust head lamps may cause dangerous driving conditions for you and other drivers on the road. Record the head lamp position before the installation of this lowering kit and adjust to original factory position after the completion to ensure a safe and enjoyable experience. Refer to Owner's Manual.

**Installation Warning:** IHC Suspension recommends all steps and procedures described in these instructions be performed while the vehicle is properly supported on a two-post vehicle lift with safety jacks. Otherwise, park vehicle on a clean flat surface and block the rear wheels for safety. Engage the parking brake. Disconnect the vehicle power source at the ground terminal on the battery. Lock the steering wheel in the straightforward position with the column lock or steering wheel locking device. Raise the front of the vehicle and support with safety jack stands at each frame rail behind the lower control arms.

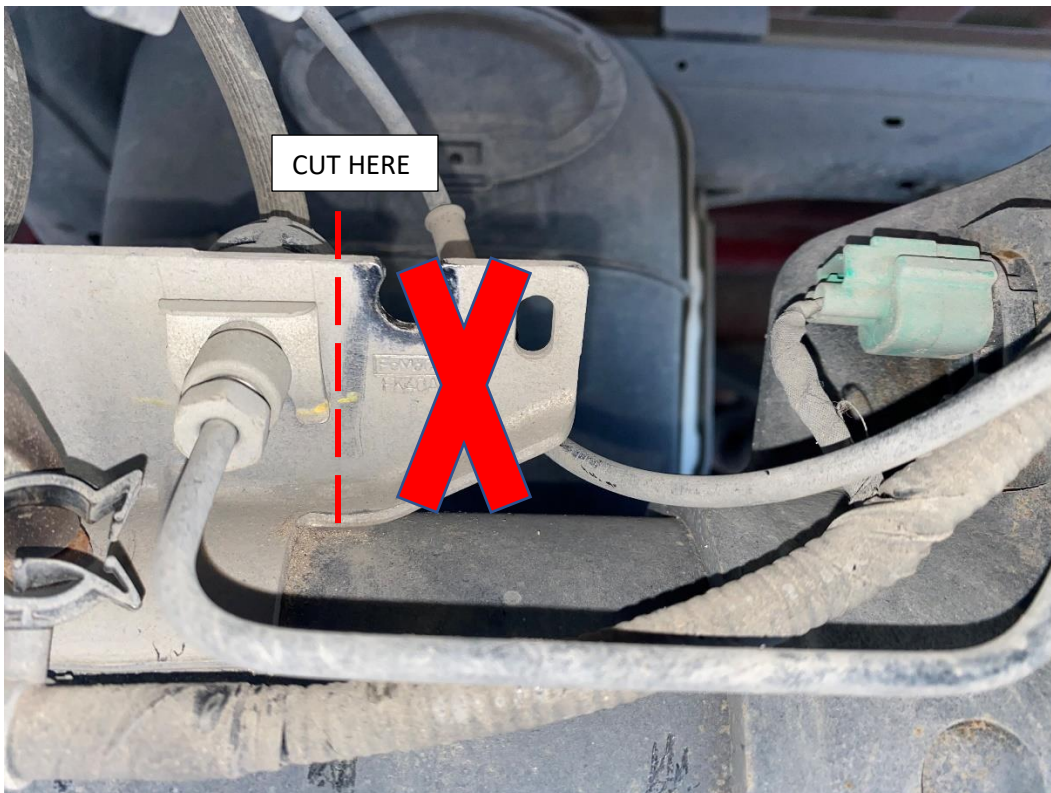
Before Starting Installation IHC Suspension highly recommends that the installation of this product be performed by a professional technician with experience working on and installing suspension products. Professional knowledge and skill will typically yield the best installation results. If you need an installer in your area, please contact IHC Suspension Customer Service to find one of our IHC Suspension Authorized dealers. ·A Factory Service Manual for your specific Year / Make / Model is highly recommended for reference during installation. ·All lowered vehicles may require additional driveline modifications and / or balancing. ·A vehicle alignment is REQUIRED after installation of this product. ·Speedometer / Computer recalibration is required if changing +/- 10% from factory tire diameter. ·A vehicle lifts or hoist greatly reduces installation time. Vehicle must be in excellent operating condition. Repair or replace any and all worn or damaged components prior to installation of lowering kit Installation time estimates are based on an available vehicle hoist. INSTALLATION BY A PROFESSIONAL IS HIGHLY RECOMMENDED

1. Disconnect the negative terminal on the battery. Jack up the front end of the truck and support the frame rails with jack stands. NEVER WORK UNDER AN UNSUPPORTED VEHICLE! Remove the rear tires.
2. Remove spare tire. NOTE: spare tire will no longer be sustained from bottom. Will need to be eliminated.
3. Remove exhaust after muffler. Customer will need to re-hoop exhaust or do turn downs before axle.
4. Loosen all ABS wiring and brake lines from differential.



5. On DRIVER SIDE cut bracket. REFER TO PIC BELOW

**NOTE: DO NOT CUT BRAKE LINES!!!**





6. Install both axle clamps to differential housing. Axle clamps needs to be flush with diff. Refer to pic



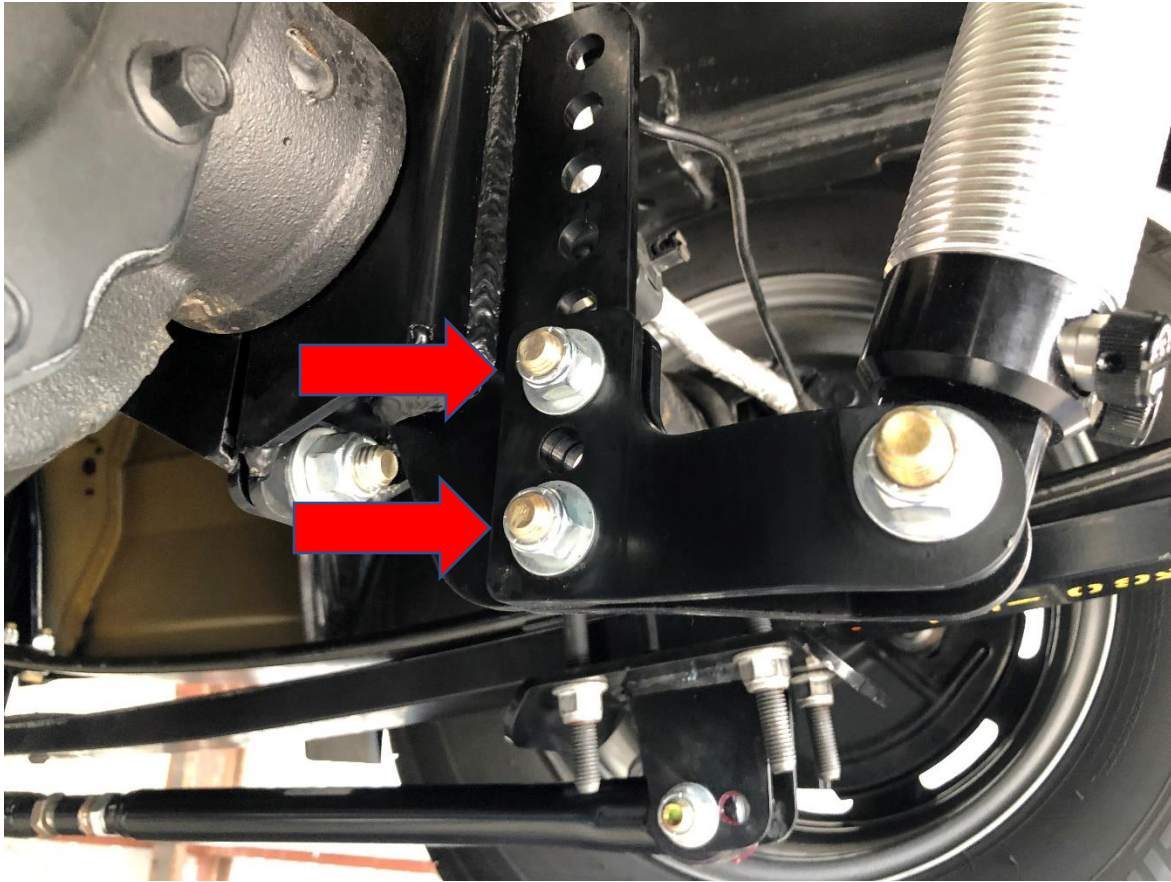
7. Install level on axle clamp and tighten. **TORQUE to 80 FT-LBS**

**NOTE: Suspension must be loaded when tightening.**

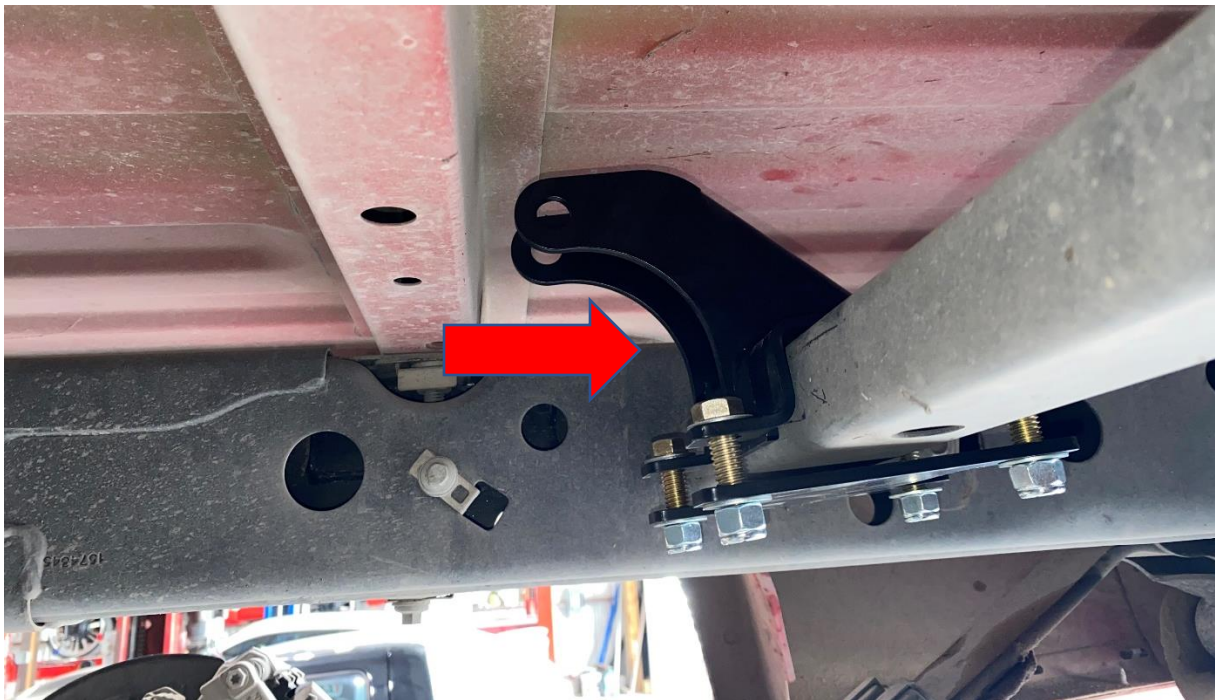




8. Install Lower shocks tabs to axle clamp. Recommend setting at lowest setting. **TORQUE to 52FT-LBS**



9. Install upper shock bracket to existing frame crossmember. **DO NOT TIGHTEN YET.** Refer to picture.



10. Install rear shocks and align upper bracket. **TORQUE to 52 FT-LBS**
11. **NOTE: REAR SHOCKS HAVE ½ INNER SLEEVE THAT NEEDS TO BE INSERTED TO SHOCKS!**

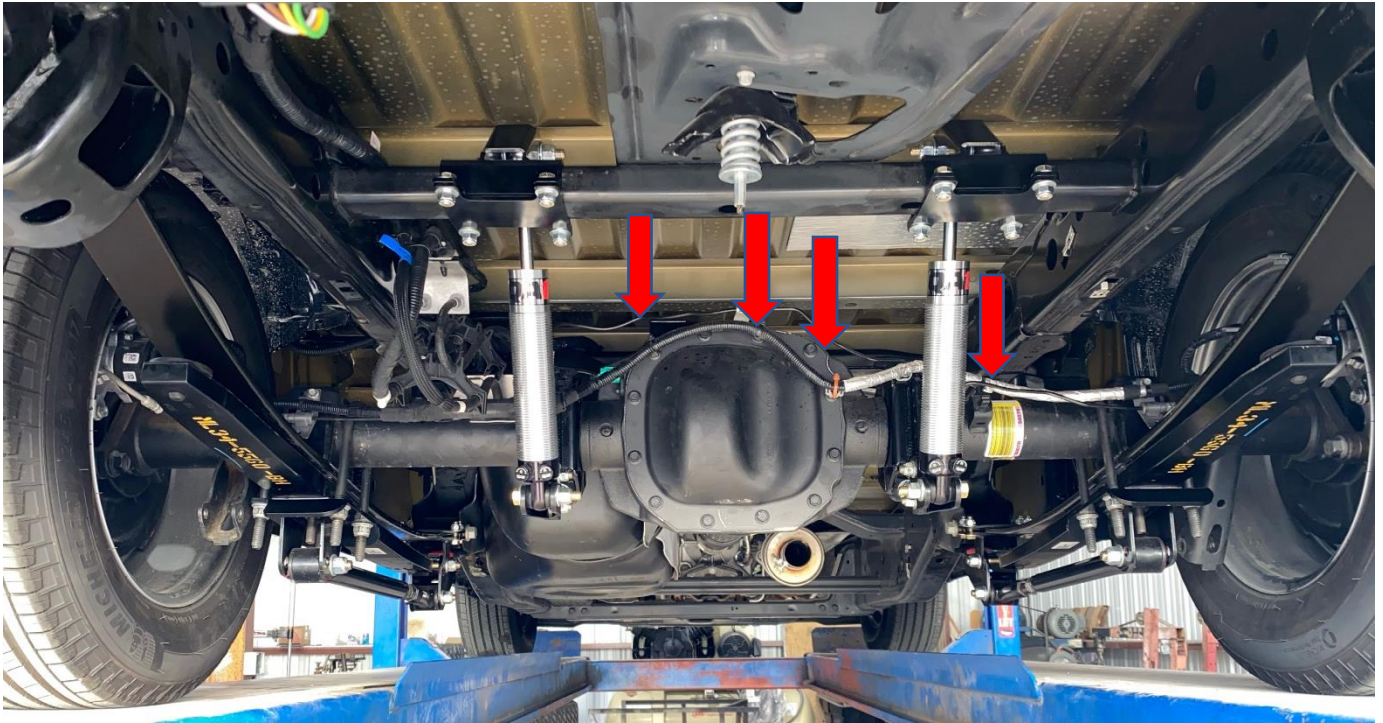


12. Install rear shocks and **TORQUE 80FT-LBS.**





13. Install ABS wiring and brake line back refer to pic.



14. Install the wheels and lower the vehicle to the ground. Torque the lug nuts to the wheel manufacturers specs. Jounce the vehicle to settle the suspension to the new ride height. Reconnect the battery ground terminal.
15. Continue to lower vehicle on leveled payment and inspect shock to ensure correct length. If shock is too collapse adjust lower shocks tabs or rotate lower axle clamp.

**FAILURE TO PERFORM THE POST INSPECTION CHECKS MAY RESULT IN VEHICLE  
COMPONENT DAMAGE AND/OR PERSONAL INJURY OR DEATH TO THE DRIVER AND/OR  
OTHERS**

#### **Final Checks & Adjustments**

16. Once the vehicle is lowered to the ground, check all parts which have rubber, Delrin or urethane components to ensure proper torque. Torque lug nuts to the wheel manufacturer specs. Move vehicle backwards and forwards a short distance to allow suspension components to adjust. Turn the front wheels completely left then right and verify adequate tire, wheel, brake line, and ABS wire clearance. Test and inspect steering, brake and suspension components for tightness and proper operation. Inspect brakes hoses and ABS lines for adequate slack at full extension, adjust, as necessary.

#### **MAINTENANCE**

17. RECHECK ALL HARDWARE FOR PROPER TORQUE VALUES AFTER 500 MILES, AND THEN PERIODICALLY AT EACH SERVICE INTERVAL THEREAFTER. RECOMMENDED TO PERFORM MAINTENANCE ON ALL BALL JOINTS AND CONTROL ARMS. ADD GREASE EVERY 6 MONTHS OR EVERY 10K MILES. FAILURE TO PERFORM MAINTENANCE WILL CAUSE PREMATURE WEAR ON BALL JOINTS AND BUSHING.